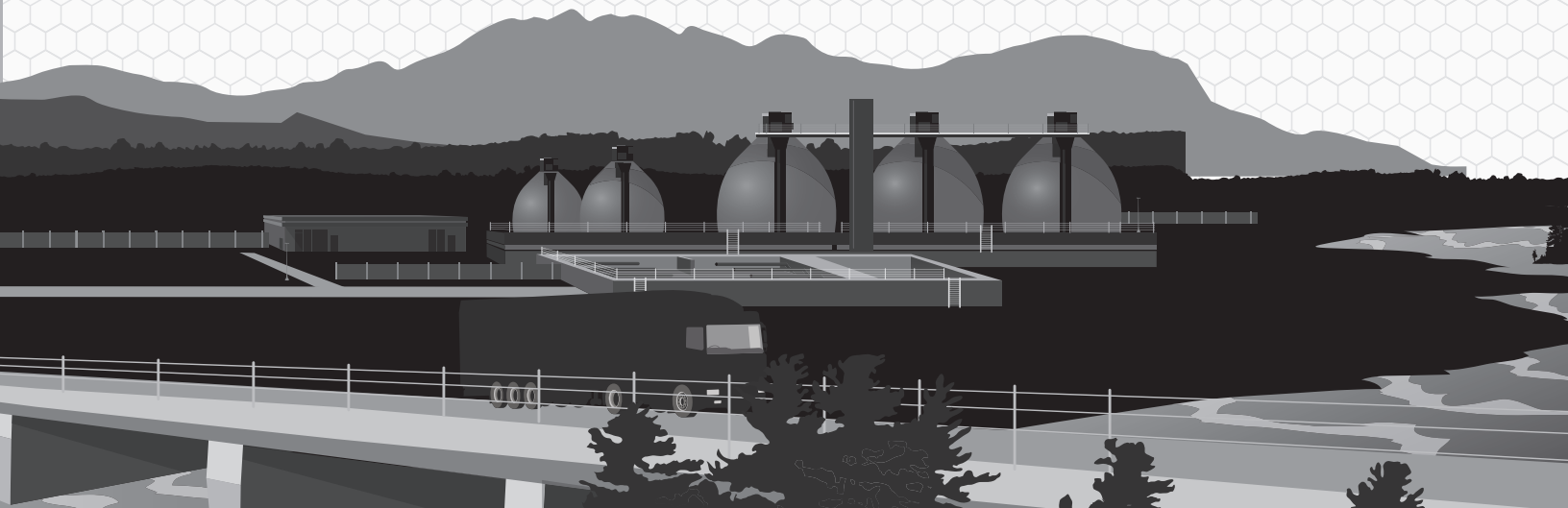


FLUID LEVEL MEASUREMENT

- + Sensor Optimized for Fluids
- + User-Configured Parameters
- + Key Advantages of Lasers



The Ultimate Sensor Engineered to Measure Fluids without Contact

After years of research and development, LTI has engineered the ultimate non-contact fluid measurement sensor specifically designed to directly measure fluids that are highly reflective, turbulent and with any dielectric properties.



TruSense® S-300 Series:

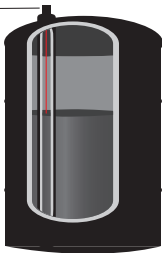
- Outputs data in 4-20, 4-20 HART and RS232 formats
- Produces accurate results over long ranges
- Aligns the transmit/send lens with a built-in laser pointer
- Installs and configures easily

| Feature Cased & OEM versions | Visible Alignment Laser | RS-232 | 4-20/HART | Input/Output Trigger |
|------------------------------|-------------------------|--------|-----------|----------------------|
| S-300 | | ✓ | | ✓ |
| S-310 | ✓ | ✓ | | ✓ |
| S-330 | ✓ | ✓ | ✓ | |

Accurate and Repeatable Results

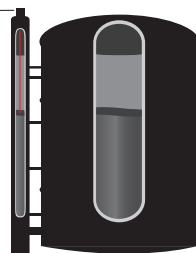
- Capable of generating accurate measurements on highly reflective surfaces, such as clear water
- Generates reliable results by stabilizing the reflections picked up by the receiver
- Collects consistent data by smoothing out the reflective peaks and valleys caused by fluids in random motion

S3XX Fluid Sensor



Stilling Well

S3XX Fluid Sensor



By-pass Pipe

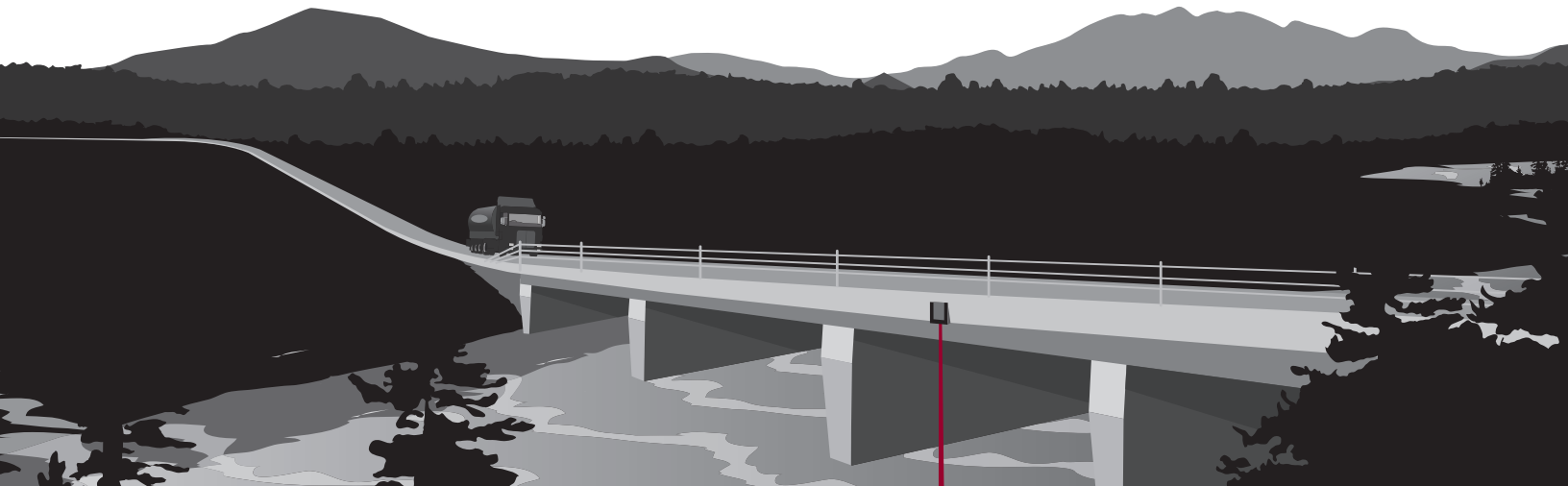
The S300-series can also be used with simple stilling wells and by-pass pipes to measure fluids.

Advantages Like No Other

- Provides instantaneous measurements that are very accurate, even over long ranges
- Avoids false echoes by creating a beam with virtually no spread that can be shot through narrow spaces or small-diameter stilling wells
- Provides a sensor that can be shot through protective screens and near flat walls
- Installs at the top of a well for easy mounting, access and maintenance
- Saves time with little to no required calibrations

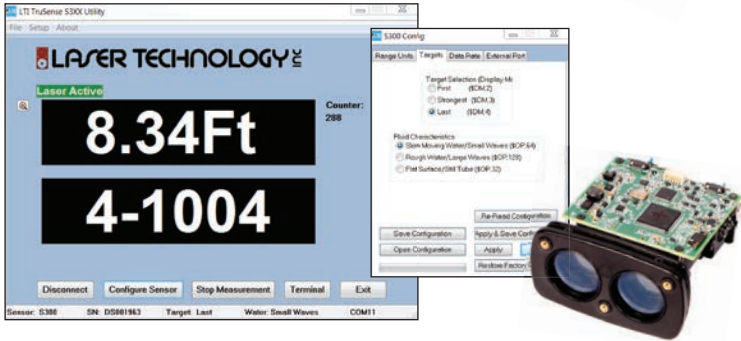
Applications and Industries

- Water and Wastewater
- Chemicals Processing
- Food and Beverage



System Integrator Friendly

- Use the TruSense OEM versions
- Access application support
- Experience intuitive user interface software
- Configure your sensor with the Power/Comm cable



Demo Program

Pre-qualified system integrators and end-users can have an opportunity to test a TruSense laser to confirm that LTI's pulse laser technology works in their specific application. Ask an LTI representative about our demo program.



Ruggedized Enclosure

- Protects the sensor from contamination or damage
- Combines with a tank adaptor to fit most tanks/silos
- Meets the toughest industrial standards
- Includes a terminal block



Diffuser Lens

Use the optional diffuser lens to obtain accurate measurements directly to clear liquids



Tank Adaptor
(air-purge ready)
#7035146



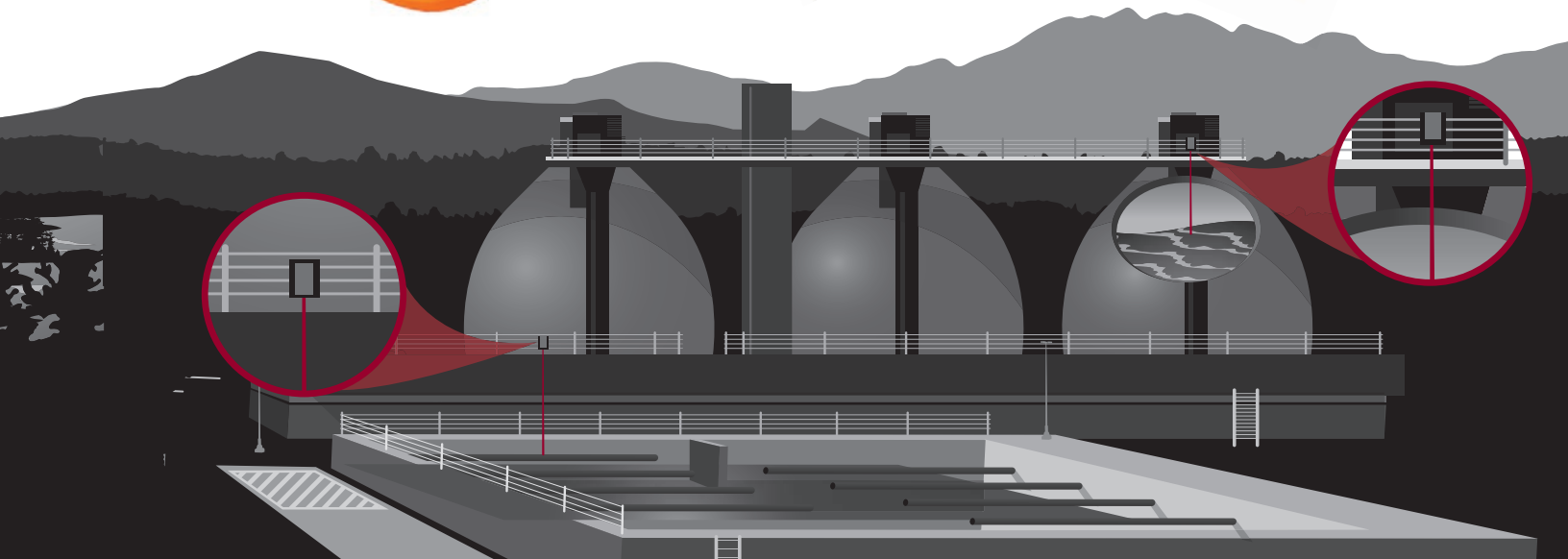
4-In Flange
#3004960



Dust Tube
#3004957



Spanner Wrench
#9034501



Specifications

| | | TruSense S-300 Series |
|---------------------------------|--------------------------|---|
| Performance | Min Range | 1.5 ft (46 cm) |
| | Max Range | 200 m; 50 m with diffuser lens option |
| | Accuracy | ±4 cm |
| | Data Output Rate | <1 Hz to 14 Hz |
| | Target Modes | First, strongest, last |
| Optical & Electrical | Wavelength | 905 nm (near IR) |
| | Divergence | 3 mrad (equal to 1-ft beam diameter @ 328 ft or 30 cm @ 100 m) |
| | I/O | S-300 = TRIG, SDI-12, RS232 without alignment laser S-310 = TRIG, SDI-12, RS232 with alignment laser S-330 = 4-20, 4-20 HART with alignment laser |
| | Baud Rate Min/Max | 9,600/230,400 |
| | Input Power | 24 VDC |
| | Current Draw | Measuring = 150 mA, Standby = 40 mA |
| Physical | Dimensions (L x W x H) | 4.11 x 3.22 x 1.64 in (104.4 x 81.7 x 41.6 mm) |
| | Weight | Standard = 4.8 oz (138.6 g) OEM = 2.7 oz (76 g) |
| | Housing & Frame Material | Glass-filled polycarbonate |
| Environmental | Eye Safety | Class 1, 7 mm (FDA, CFR21) Class 1m (IEC 60825 - 1 : 2001) |
| | Shock/Vibration | MIL-STD-810 |
| | Moisture | IP67 |
| | Operating Temperature | - 20° to 140° F (- 28° to 60° C) |



Ruggedized Enclosure:

Weight: 8 lbs (3.62 kg)
Dimensions: 5 in diameter x 10 in long (12.7 x 25.4 cm)
Conduit Fitting: 3/4-in NPT

U.S. Ratings for Enclosure:
Division Ratings
Classified
Class I, Div 1 Groups B, C, D
Class II, Div 1 Groups E, F, G
Class III Type 4x
Zone Ratings
Class I, Zone 1, AEx d IIC
Ex d IIC
Class III
Type 4x
Approved Instrument Housing
Class I, Div 1 Groups B, C, D
FM 3615
Class II, Div 1 Groups E, F, G
Type 4x

Global Ratings:
ATEX (flameproof-DEMKO)
II 2G Ex d IIB+H2
II 2D Ex tD A20
IP66
IECEX (flameproof-UL)
Ex d IIB+H2
IP66 IEC60529

© LTI 2016 1454 EN

